



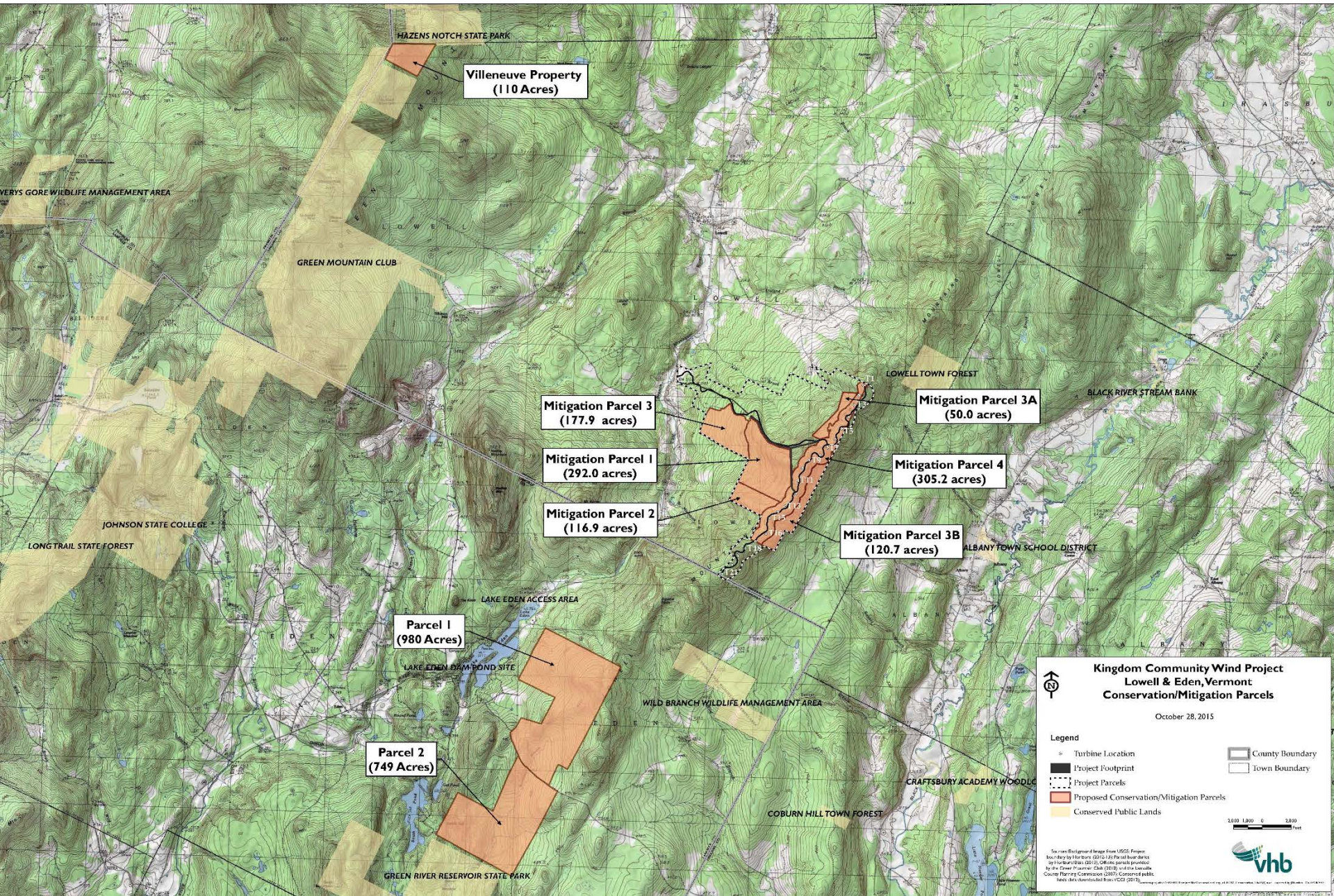
Testimony Regarding Potential Act 250 Changes

Presented by

Jeffrey A. Nelson, CPESC, CPSWQ

February 26, 2019





**Villeneuve Property
(110 Acres)**

**Mitigation Parcel 3
(177.9 acres)**

**Mitigation Parcel 1
(292.0 acres)**

**Mitigation Parcel 2
(116.9 acres)**

**Mitigation Parcel 3A
(50.0 acres)**

**Mitigation Parcel 4
(305.2 acres)**

**Mitigation Parcel 3B
(120.7 acres)**

**Parcel 1
(980 Acres)**

**Parcel 2
(749 Acres)**

**Kingdom Community Wind Project
Lowell & Eden, Vermont
Conservation/Mitigation Parcels**

October 28, 2015

Legend

- Turbine Location
- Project Footprint
- Project Parcels
- Proposed Conservation/Mitigation Parcels
- Conserved Public Lands
- County Boundary
- Town Boundary

2000 1000 0 1000 Feet

Soil map (background) derived from USGS. Project boundary by the State (05/15/15) Parcel boundaries by the State (05/15/15). Other parcels provided by the Green Mountain Club (05/15) and the Lowell County Planning Commission (05/15). Conserved public lands derived from the Vermont Department of Public Safety (05/15).



Kingdom Community Wind – Wet Pond D – May 11, 2018



Lowell, VT | Green Mountain Power



Kingdom Community Wind – Level Spreader A9 – July 27, 2018

Lowell, VT | Green Mountain Power



Kingdom Community Wind – Level Spreader A18 – July 27, 2018

Lowell, VT | Green Mountain Power



Kingdom Community Wind – Level Spreader C7 – June 13, 2018

Lowell, VT | Green Mountain Power